



A Church Extension Planning Guide

Seating

WHEELCHAIR ACCESSIBLE VIEWING POSITIONS ARE REQUIRED IN ASSEMBLY AREAS WITH FIXED SEATING (PEWS)

SEE TABLE 512.4(6) IN THE OHIO BASIC BUILDING CODE AND ART. 4.33 OF AMERICAN NATIONAL STANDARD A.N.S.I. A117.1

ACCESSIBLE POSITIONS REQUIRED	NUMBER OF FIXED SEATS (PEW CAPACITY)
2 MIN.	0 TO 74
3	75 TO 99
4	100 TO 149
5	150 TO 199
6	200 TO 274
7	275 TO 349
8	350 TO 424
9	425 TO 499
10	500 TO 599

ADD ONE POSITION FOR EACH 100 SEATS OVER 500

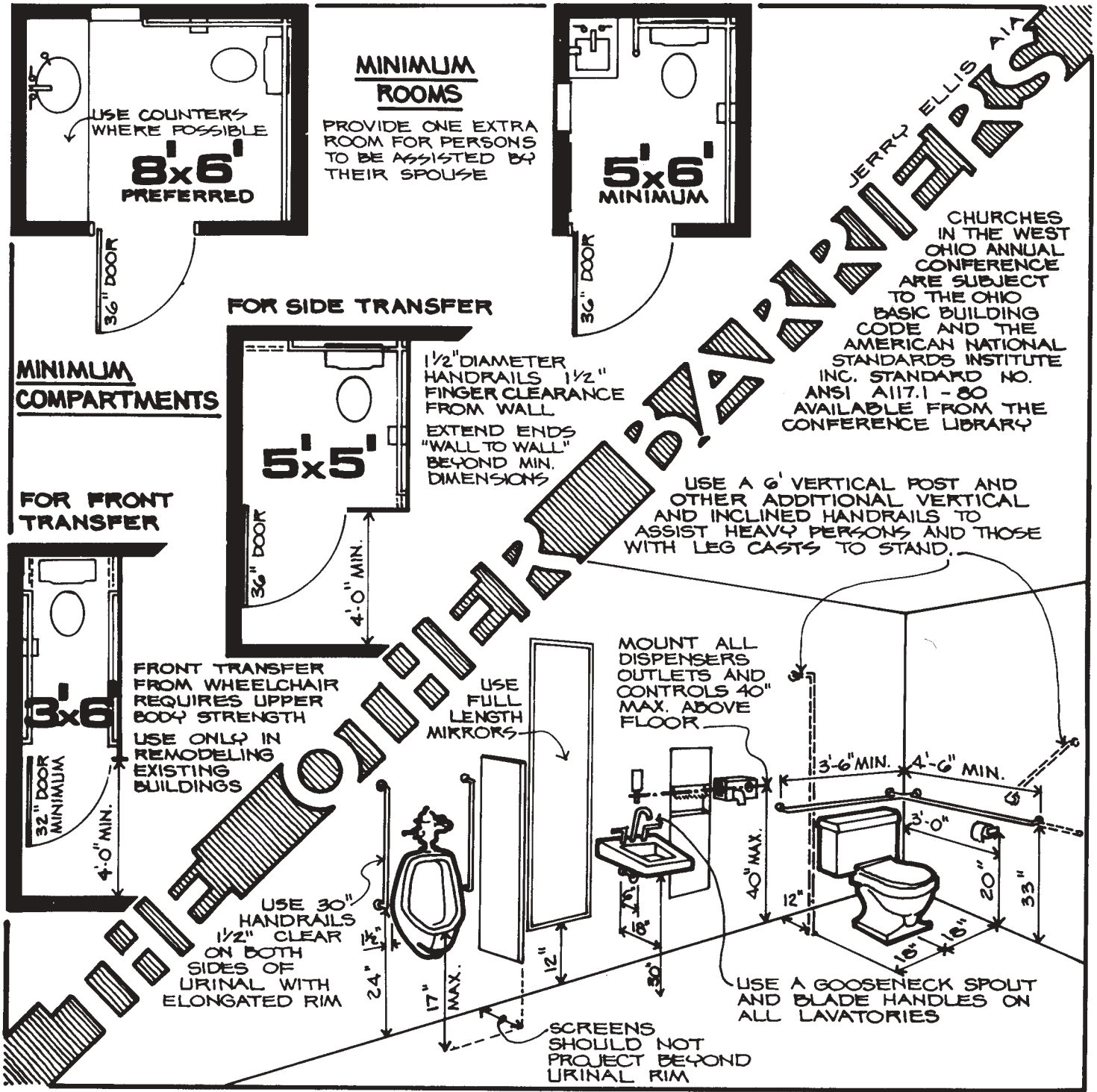
SEE UNITED METHODIST BOOK OF DISCIPLINE ¶ 2543-4C (1988)

- EACH VIEWING POSITION SHALL ACCOMMODATE TWO PERSONS IN WHEELCHAIRS.
- DISPERSE VIEWING POSITIONS THROUGHOUT THE NAVE SEATING AREA TO ALLOW PERSONS IN WHEELCHAIRS TO BE SEATED WITH THEIR FAMILIES.
- PROVIDE TWO ACCESSIBLE POSITIONS IN THE CHOIR LOFT VIA ACCESS RAMP

DO NOT BLOCK EGRESS FROM ADJACENT AISLES

DO NOT BLOCK ANY AISLES

Toilet Facilities



Additional Planning Guides addressing a variety of facility planning issues are available from:
 Church Extension
 P.O. Box 7030
 Indianapolis, IN 46207

Phone: 317.635.6500
 Fax: 317.635.6534
 Web: www.churchextension.org
 E-mail: info@churchextension.org